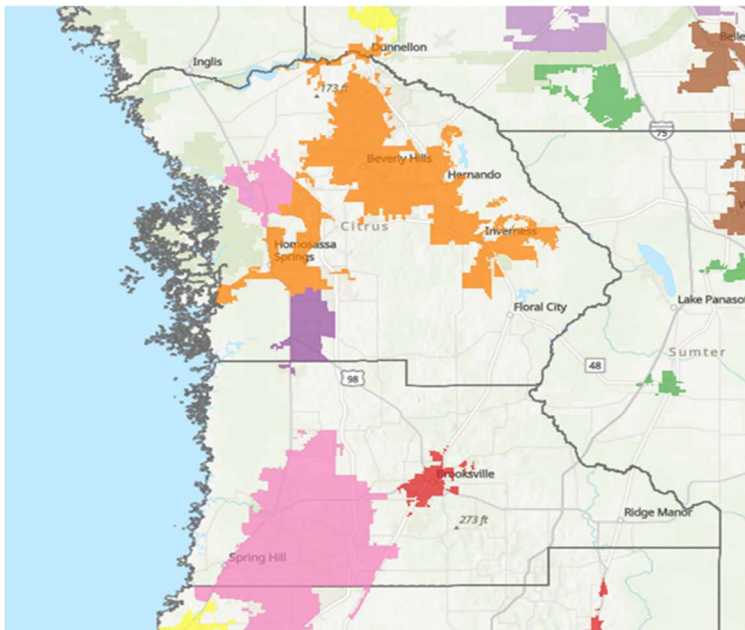




HERNANDO/CITRUS METROPOLITAN PLANNING ORGANIZATION (MPO) APPORTIONMENT PLAN



**Approved by the
Hernando County
Metropolitan Planning
Organization Board (MPO) on
November 2, 2023**

TABLE OF CONTENTS

BACKGROUND3

MEMBERSHIP AND BOUNDARY (CURRENT AND PROPOSED)3

2023 METROPOLITAN PLANNING AREA BOUNDARY MAP5

POPULATION6

APPORTIONMENT PLAN METHODOLOGY6

APPORTIONMENT PLAN.....7

RESOLUTIONS OF SUPPORT8

Metropolitan Planning Area Boundary and Apportionment Plan

BACKGROUND

In September 1992, the City of Brooksville and Hernando County executed an interlocal agreement establishing the Spring Hill/Hernando County Metropolitan Planning Organization (MPO) to carry out a continuing, coordinated, and comprehensive transportation planning process. The creation of the MPO was the result of the population in the urbanized area reaching over 50,000 individuals. Subsequently, in June 1999, the MPO name was changed to the Hernando County Metropolitan Planning Organization (HCMPO).

In 2014, the Hernando County Metropolitan Area was re-apportioned by the Governor. Citrus County (which is contiguous and borders Hernando County) merged with the Hernando County MPO, and; therefore, became the Hernando/Citrus Metropolitan Planning Organization which includes Hernando County and the City of Brooksville, and Citrus County and the City of Inverness and the City of Crystal River.

MEMBERSHIP AND BOUNDARY (CURRENT AND PROPOSED)

The Apportionment Plan uses a non-weighted vote based on population percentage of the governmental entities within the MPO boundaries further described herein. The current voting membership is shown in the following table.

Current Hernando/Citrus Metropolitan Planning Organization Board Membership		
Governmental Entity	Number of Members	Vote
Hernando County Commission	4	4
Citrus County Commission	2	2
City of Brooksville (Hernando County)	1	1
City of Crystal River (Citrus County)	1	1
City of Inverness (Citrus County)	1	1
Florida Department of Transportation	1	0
Total	10	9

Note: FDOT District Seven Secretary is a nonvoting advisor

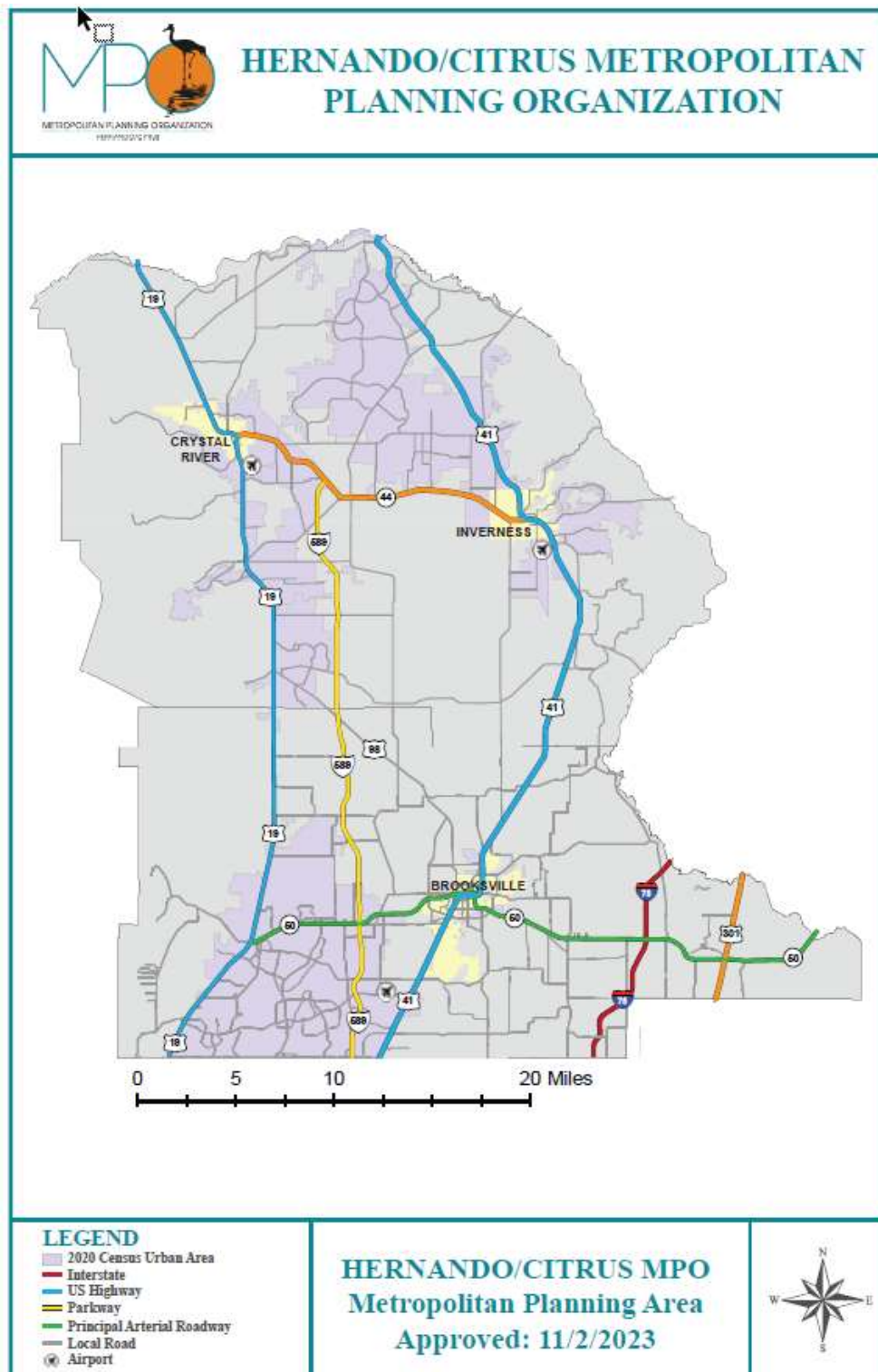
HERNANDO/CITRUS METROPOLITAN PLANNING ORGANIZATION (MPO)
APPORTIONMENT PLAN
November 2, 2023

The proposed voting membership (which does not differ from the current membership) is shown in the following table and further discussed herein.

Proposed Hernando/Citrus Metropolitan Planning Organization Board Membership		
Governmental Entity	Number of Members	Vote
Hernando County Commission	4	4
Citrus County Commission	2	2
City of Brooksville (Hernando County)	1	1
City of Crystal River (Citrus County)	1	1
City of Inverness (Citrus County)	1	1
Florida Department of Transportation	1	0
Total	10	9

HERNANDO/CITRUS METROPOLITAN PLANNING ORGANIZATION (MPO)
APPORTIONMENT PLAN
November 2, 2023

2023 METROPOLITAN PLANNING AREA BOUNDARY MAP

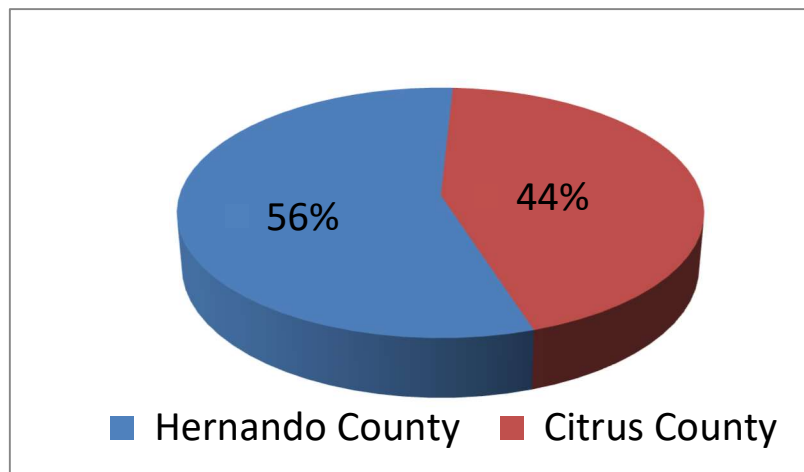


POPULATION

The Metropolitan Planning Area Boundary (MPAB) includes a population increase from 314,014 in 2010 to 348,358 in 2020 based upon the 2020 Census.

Metropolitan Planning Area Boundary Population 2010 to 2020 Based Upon the Census		
Jurisdiction	2010	2020
Hernando County	172,778	194,515
Citrus County	141,236	153,843
Total	314,014	348,358

Metropolitan Planning Area Boundary Population Distribution



APPORTIONMENT PLAN METHODOLOGY

Chapter 339.175 (3)(a), Florida Statutes states:

“The voting membership of an M.P.O. shall consist of at least 5 but not more than 25 apportioned members, with the exact number determined on an equitable geographic-population ratio basis, based on an agreement among the affected units of general-purpose local government and the Governor, as required by federal regulations.”

HERNANDO/CITRUS METROPOLITAN PLANNING ORGANIZATION (MPO)
APPORTIONMENT PLAN
November 2, 2023

The following table illustrates the individual incorporated municipality populations as a percentage of the entire transportation planning area population. This data is used to develop the MPO membership and is in accordance with the percentage of the population.

Jurisdiction	Population		
	2010	2020	% of 2020 MPO Total
Citrus County*	130,918	142,904	41.02%
City of Crystal River	3,108	3,396	0.97%
City of Inverness	7,210	7,543	2.17%
Citrus County Total	141,236	153,843	44.16%
Hernando County*	165,047	185,609	53.28%
City of Brooksville	7,719	8,890	2.55%
Weeki Wachee	12	16	0.00%
Hernando County Total	172,778	194,515	55.84%
MPO TOTAL	314,014	348,358	100.00%
* Unincorporated area			
Note: On June 9, 2020, House Bill 1215 was signed abolishing the City of Weeki Wachee.			

APPORTIONMENT PLAN

The Apportionment Plan uses a non-weighted vote based on population percentage of the governmental entities within the MPO boundaries. The voting membership is shown in the following table. The Apportionment Plan is proposing no changes in the composition of the membership or number of votes as the proposed voting membership is consistent with the 2020 census data reflected herein.

Hernando/Citrus MPO Voting Membership		
Governmental Entity	Number of Members	Number of Votes
Hernando County	4	4
City of Brooksville	1	1
Citrus County	2	2
City of Crystal River	1	1
City of Inverness	1	1
Florida Dept of Transportation (Non-Voting)	1	0
Total	10	9

RESOLUTION OF SUPPORT

The resolution of support from the Metropolitan Planning Organization Board is attached.

RESOLUTION NO. 2023-8
A RESOLUTION OF THE
HERNANDO/CITRUS METROPOLITAN
PLANNING ORGANIZATION BOARD
SUPPORTING THE ADOPTION OF THE MPO MEMBERSHIP
APPORTIONMENT PLAN

WHEREAS the Hernando/Citrus Metropolitan Planning Organization is the agency designated to conduct a continuing, coordinated, and comprehensive transportation planning process in Citrus and Hernando counties, and

WHEREAS, Section 134 Title 23 of the United States Code requires the designation of MPOs in urban areas, as defined by the United States Census Bureau; and

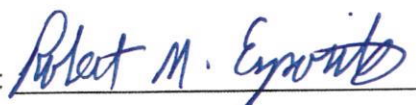
WHEREAS, the Hernando/Citrus Metropolitan Planning Organization met on November 2, 2023, to review its voting composition and agreed on the composition presented herein; and

WHEREAS, Section 339.175(4)(a), Florida Statutes, requires the Governor to review the composition of the Metropolitan Planning Organization's membership in conjunction with the decennial census.


NOW, THEREFORE, BE IT RESOLVED, that the **Hernando/Citrus Metropolitan Planning Organization** approves the submittal of a **MPO Membership Apportionment Plan** to the Governor's Office.

PASSED and DULY ADOPTED by the Hernando/Citrus Metropolitan Planning Organization on November 2, 2023.

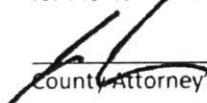
Attest:

By: 
Robert M. Esposito
MPO Executive Director

Hernando/Citrus Metropolitan Planning
Organization

By: 
~~Ruthie Schlabach~~ Jerry Campbell
~~MPO Chair~~ Vice Chair

Approved as to Form and Legal Sufficiency
for Review and Content by


County Attorney's Office